



VADROUILLE THE FROG

AND HIS EPIC JOURNEY TROUGH VERDUN

FAMILY BOOKLET

age 6 - 12



TOURISME
GRAND VERDUN

TERRITOIRE DE PARTAGE

Hello, my name is Vadrouille
the Frog ! I put on my
traveler outfit because I am
going to help you explore
the city of Verdun!



You will also encounter
my friends : Princess
Verduna, Killian the
warrior, Roger and the
english man King Louis!

? **QUIZ?**

Will you be able to
answer the quizzes
that I have prepared
for you?



With «Open your Eye»
you must come to the
current location and
answer questions!

GO!



I have prepared a small
route of 3 km through
the streets of Verdun !

Are you ready to go on an adventure ?
Then let's go !

VERDUN, *A hole history...*

The origin of the name «Verdun» comes from celtic and from latin «Vero or Viro» which means «gué» (water stream) et «dunum» which means «Fortified High City». As the name suggests Verdun is well built at the edge of a river that is the Meuse

Verdun has long been a frontier town that must be protected by its position

During the **ancient periode** of history, it was first an oppidum * (by the Celts), then a castrum * (by the Romans).

During the **Middle Ages**, the ramparts around the city were built. Verdun has a religious history as well with a millennial age cathedral. It has many churches and convents. Like Saint-Vanne abbey, which dominated the city, and is said to have a European influence. Verdun had a special status, it was «A free imperial city».

Verdun belonged to the Holy Roman Empire. And therefore had rights and duties: to be able to strike its own currency, protect itself and finance its ramparts.

In the **17th century**, Vauban, a famous military architect, modified the fortifications of the city and the underground citadel of Verdun.

After the war of 1870, Verdun became a bordered city with many forts built around it under the command of General Séré de Rivières who gave his name to the fortification system that he created himself. These forts will be used later on during World War 1.

Verdun is obviously known for **the battle of 1916**, which lasted for 300 days and 300 nights.

You will come to discover throughout your journey the city of Verdun through its iconic monuments.

It is Your turn now

1 Monument to the Dead and Children of Verdun

In your opinion, what is a «pollu» ? «Les Poilus» (The hairy) was the nickname given to french solders during world war one. The legend tells that they were given the nickname due to the lack of hygiene of not being able to shave while in the trenches, and that their mustaches and beards eventually grew, so that they seemed all hairy. The truth, is that «being hairy» or «bearded» is an old expression meaning «to be brave».



How do you recognize the «Pollus»?

Go to the monument and find the Poillu ! Have you found it ?
Where is he ?



S T U V W

Repost your answer on page 17

Bandolier



A Puttee

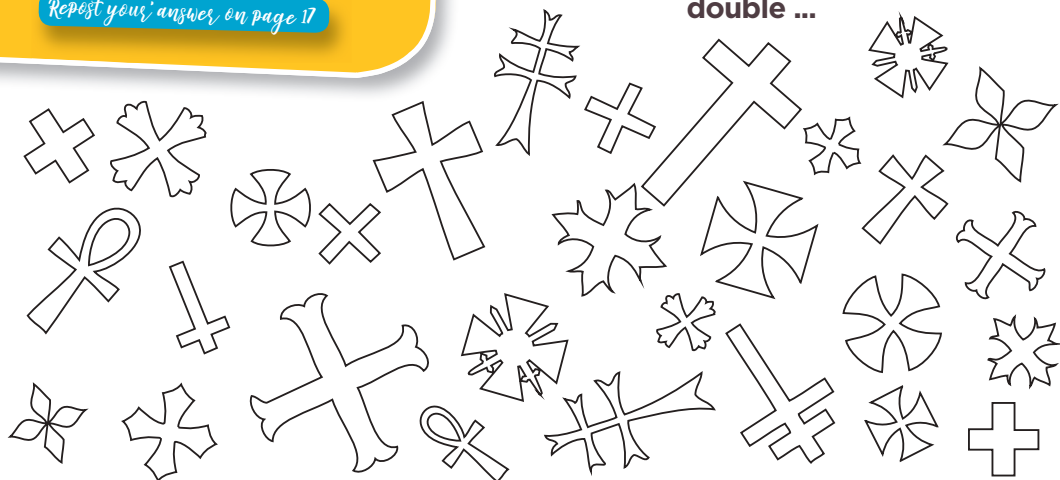


Adrian helmet

(A French helmet)



Among these crosses, find which the one that does not have its double ...



Have you found it ? This cross is called the «Cross of Lorraine», it is the emblem of the region in which you find yourself ! Today, Lorraine, Champagne-Ardenne and Alsace form the Grand Est region.

2 Porte Chaussée



The **Porte chaussée**, also called **Tour Chaussée** is a Drawbridge that was used either to open or close access to the city, just like the door to your house. It takes its name from the road (roadway) established in the twelfth century.

? QUIZ ?

What was the **Porte Chaussée** used for?
(many possible answers)

- (A) It was the entrance to a castle. Princess Verduna lived in one of the two towers.
- (B) It protected the city from bad people thanks to its drawbridge and its portcullis.
- (C) It was a prison where the greatest bandits of the city were locked up.

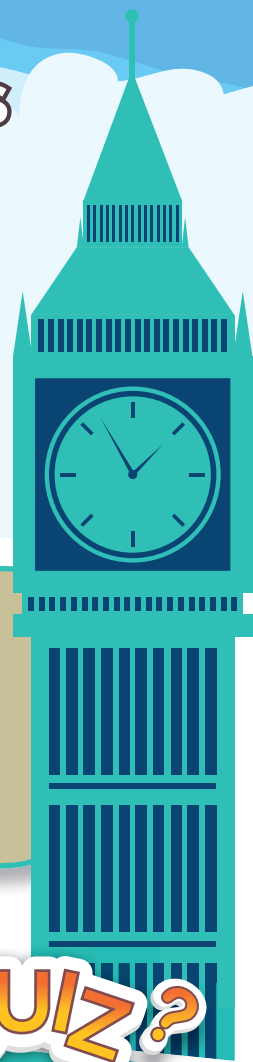


Find the portcullis on
the monument !

3 Quai de Londres

Do you know the city of London ?

London is the capital of the United Kingdom, a kingdom more commonly known as England. This capital is located in the south of Great Britain, the largest island of the kingdom. It is also the largest city in the United Kingdom. At its origin, «Londinium» was founded by the Romans following the invasion of the year 43 AD led by the emperor Claude. It was chosen thanks to its strategic position being close to the banks of the «River Thames» because at that time the trades were done through waterways.



A English object is on the dock... will you be able to spot it ?

WRITE YOUR ANSWER



? QUIZ ?

Why do you think this symbol is here in Verdun?

- (A) To stay in touch with the English and call upon the Queen in case of emergency.
- (B) In honor of the City of London who donated money to help Verdun rebuild itself during the 14-18 war.
- (C) To decorate the Quai de Londres

4 From Monument to Victory



It symbolizes the victory of France during World War One and the reconstruction of the city. Verdun was destroyed in 10 months during the Battle of Verdun and rebuilt in 10 years. A Celtic or Carolingian warrior overhangs the monument. He looks at the borders to protect the city from invaders

Killian at your service !

? QUIZ ?

Now will you be as courageous as this Celtic warrior to reach the top of the monument? It's up to you to count the number of steps.

- (A) 65 (B) 72 (C) 80

Complet the following text !



Gentlemen here are the walls where the supreme hopes of Germany have been shattered

It was here that they had sought to win a loud and theatrical success. It is here that with a calm firmness France answered back : one does not pass :

Honor to the soldiers of Verdun ... They are sown and to affix of their blood the

who rise today.

XIII - IX - RAYMOND POINCARE - MCMXVI

All those who have been our of glory and misery, all who have mounted here a wall with there chest so that the enemy could not pass, and who having been worthy deserve to be honored will be able to find in intimacy

of your guest book in this sanctuary dedicated to the greatest human heroism. Let us hope that the men of the generations who will succeed us come to

look for and collect lessons

XXVII - VIII - A MAGINOT - MCMXXII

5 Princerie Museum

Nowadays this building is a Art and History Museum located in Verdun, also called Princerie Museum. There are listed for most objects of the City dating from prehistory to the early twentieth century. You will find a Renaissance-style cloister at the front of the building and a garden on the back of the same building.



You will see hanging on the wall an iron panel. Which one is the correct one ?

Repost your answer on page 17



Who lived in this building ?

LE P I C R

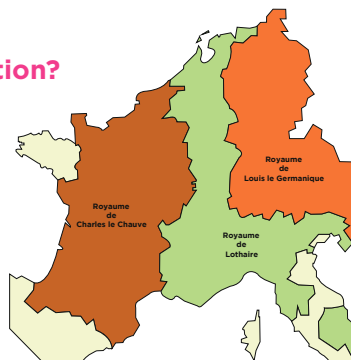
Index

- 1 - The first letter to find is the 18th letter of the alphabet.
- 2 - The 2nd letter is the last letter of the name «VERDUN».
- 3 - The 3rd letter is the third vowel of the alphabet.
- 4 - To find the last letter complete this song :

Who had this crazy idea one day to invent ducation?
It's this great Charlemagne, great Charlemagne!

The treaty of Verdun, as its name indicates was signed here in Verdun. It allowed to separate the Charlemagne's empire into 3, between his three sons.

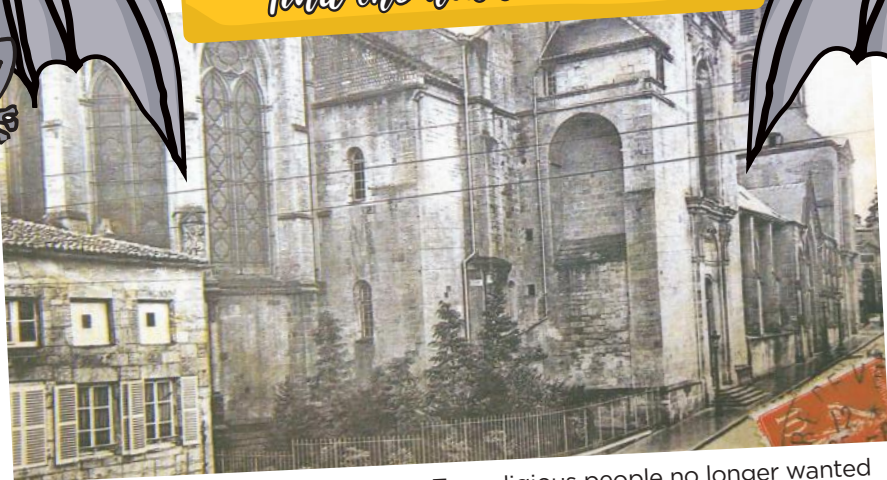
Today, this corresponds to towards West of France and East of Germany.



6 Verdun Cathedral

The first religious establishment dedicated to the Virgin Mary, Verdun Cathedral is the oldest in Lorraine and one of the oldest in Europe.

Find the hidden part!



It was hidden for almost 150 years. Too religious people no longer wanted to see the medieval part of the Cathédrale because they deemed it to be too much outdated. During the Great War the burst of shrapnel shells allowed to rediscovery it along with other people located inside.

Do not go to the towers,
it's way before!

On the stones, you will see symbols carved through Stonemasonry during the 12th century. We've named these people «**Pissworkers marks**».

Each stonecutter was paid for by the number of stones cut. They scupulted so-called symbols «**marks**» to be able to recognize them.



What are the stains marks
that you can see ?
Find the intruder !

Repeat your answer on page 17



7 Palais Episcopal

The episcopal term comes from the Latin «episcopus» which means «bishop». So the Episcopal Palace is where the bishop, the most important religious person in Verdun at the time, lives. However in Verdun, the Bishop has not lived there since 1993 to make room for an association.

Today that hosts this Episcopal Palace?
Find the answer using the rebus



CONVIVIAL

2



WRITE YOUR ANSWER



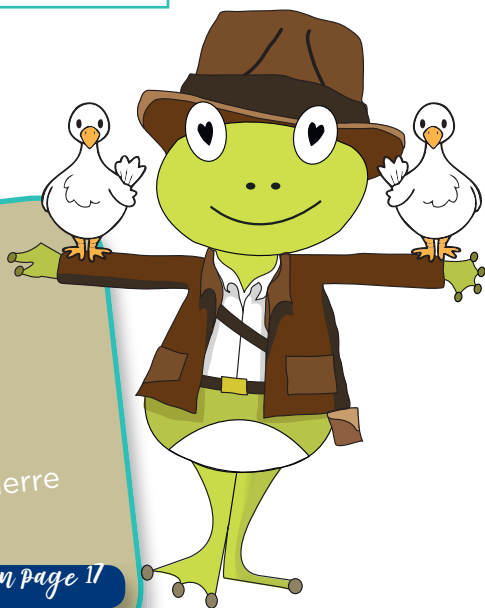
What word is written on the paper held by the dove on the bronze sculpture in front of the entrance to the palace?

(A) Mémoire

(B) Paix

(C) Guerre

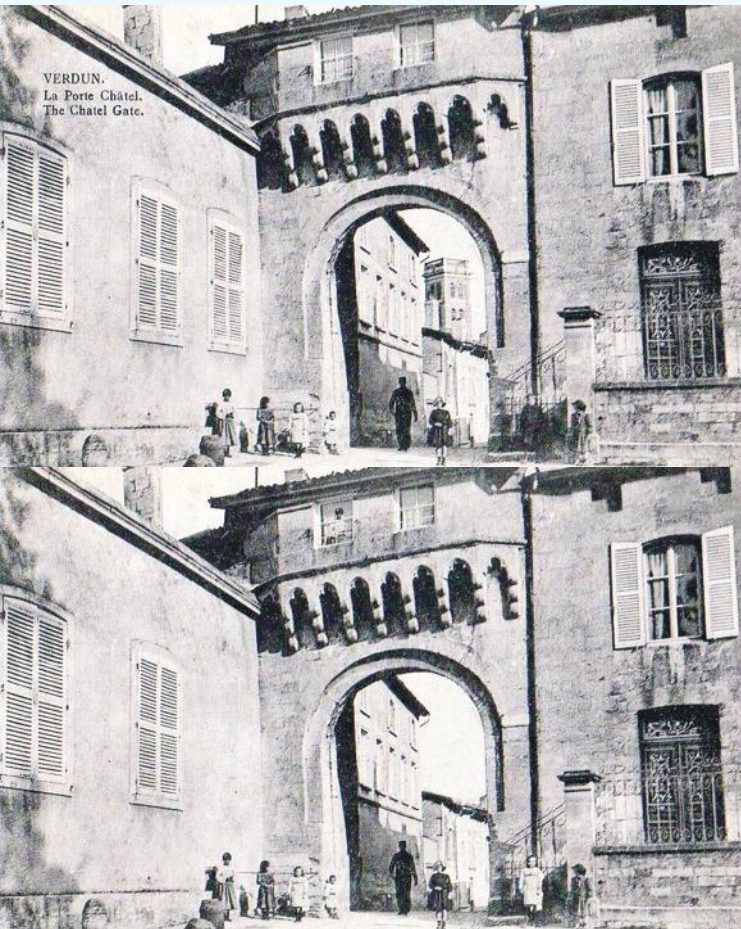
Repost your answer on page 17



8

Porte Châtel

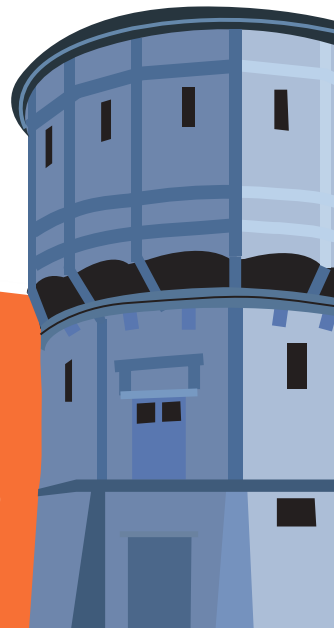
Built in the 12th century, it is the oldest gateway to the city. It is part of the ancient walls that encircled the upper town. It controlled access to the city from Mont Saint-Vanne, on which rose the famous Benedictine abbey of Saint-Vanne.



Find the 7 differences and circle them!

As you can see, the surroundings of this gate have changed after the bombing during the Great War.

This water tower, just like the telephone booth, was offered in Verdun by the city of London to help rebuild it.



9 Citadel

The word Citadel means in Italian «little city». It was usually built on the mountain top of the city. It's a fortress that allowed soldiers to observe their enemies and thus to be able to protect and defend the territory and its people. This stronghold was a high place of activity of the city. Verdun has always been an important strategic location that had to be protected from invaders. After Verdun joined the Kingdom of France in 1648, Louis XIV wanted to ensure that its borders were well guarded, and decided to improve the defenses of all the major strongholds of the country.

In your opinion, who helped Louis XIV strengthen the existing Citadel of Verdun by building bastions?

V ☐ B ☐ N

Which word is written above the opening door?



- (A) Manutention
- (B) Garnison
- (C) Citadelle

Repeat your answer on page 17

From 1886 to 1893 galleries were dug under the Citadel of Verdun. These galleries allowed to shelter 2,000 men with their food. During the Battle of Verdun in 1916, it played an important role as well. It housed dormitories, powdered and ammunition stores to supply the front, a bakery that produced 41,000 rations a day, as well as equipment for soldiers to rest and enjoy a telephone exchange or to go to the infirmary.

? QUIZ ?

The Verdun Citadel is also called ?

- ① Enclosed Citadel
- ② Underground Citadel
- ③ Citadel buried

10 St-Amand's Bridge

As mentioned earlier, Louis XIV wanting to protect his kingdom, asks his engineer to build 3 bridges in a lock shape in Verdun. **The Saint-Amand bridge is the only one in France still in working today.** A lock bridge serves to retain the water of the canal. It was imagined by Vauban to voluntarily provoke floods in case of invasion. That's why they say it's kind of a defense system.

C'est moi le roi
Louis XIV !



**What is the name of the
King's engineer?**

$$2 + 6 - 1 - 0 = \square \text{ T}$$

$$10 + 5 + 4 - 17 = \square \text{ P}$$

$$9 - 6 + 1 - 3 = \square \text{ R}$$

$$20 + 4 - 8 - 10 = \square \text{ E}$$

$$4 + 5 - 2 - 2 = \square \text{ U}$$

$$5 + 8 + 0 - 9 = \square \text{ L}$$

$$15 - 3 + 2 - 6 = \square \text{ I}$$

$$7 + 2 + 4 - 10 = \square \text{ A}$$

Reporte les lettres pour retrouver la réponse

2	6	8	1	3	5	4	7
---	---	---	---	---	---	---	---



A channel that goes below the bridge? What is its name ?

Ⓒ Minimes

Ⓜ Puty

Ⓝ Augustins

Repeat your answer on page 17

11 City Hall

This building finished in 1623 was a mansion. It was built for Nicolas Japin, responsible for the powders of King Louis XIV of France. It is bought by the city in the 18th century and after became the town hall. It experienced destruction by a fire in the 19th century. It now contains a war museum in which we find the medals that the city has received.

VERDUN is the city who has received the most !



Repeat your answer on page 17

At the back of the town hall
you will see cannons how
many are they ?

(H) 2 (i) 4 (J) 6

12 Place Chevert

Place Chevert bears his name since 1837. François de Chevert, shown on the statue, was born in Verdun in 1695. Warrior under Louis XV, he started very early, from 11 years, and became Lieutenant General of the Armed Forces for the king. This was once called Saint-croix between the Legay bridge and the Quai de la republique. You can also see monument and a medallion dedicated to Ferdinand Legay. In August 1944 he saved the bridge by taking away German explosives. The Americans could now pass and Verdun was saved.

Repost your answer on page 17

Which object is he wearing on his hat ?

A flower ☐

A perle ☐

A feather ☐



13

The Mess of Officers

A **military mess or mess hall is a cantina**, a military restaurant for officers and non-commissioned officers. In the 13th century, the mess hall designated a cooked or liquid dish (like porridge or soup), then in the 15th century a group of people ate together. In Luxembourg, the term “mess” is used instead of cantina (for example, for business purposes). In Belgium, the term is used for administration cantina's



Which animal is represented on the facade

Repost your answer on page 17

- ☐ A Lion
- ☐ A Eagle
- ☐ A Bear



EVERY CORRECT ANSWER
MATCHES A LETTER !

You have 9 letters to find.

--	--	--	--	--	--	--	--	--

PUT THEM IN ORDER TO FIND
THE MAGIC WORD AND WIN A
PRIZE !

What is the magic word?

WRITE YOUR ANSWER

*Do you wish to visit the
battlefield with your
family?*



**COME WITH VADROUILLE
THE FROG IN SEARCH OF
THE LOST BAYONET !**

Free booklet for 6-12 years
Available at the tourist office

Answer

1. C - 2. B et C 3. Cabine téléphonique - B 4. 72 - Impériale - Moisson - Camarades - glorieuse - exemples 5. 1ère pancarte - le Princtier 6. Centre Mondial de la Paix - B 8. De gauche à droite : écriture manquante, 3ème fenêtr manquante, dame à la fenêtr d'en haut, cathédrale manquante, élément d'archi-lecture rajouté au dessus de l'arche, au pied des escaliers, petite fille au lieu du petit garçon et 2 fenêtr au lieu d'une en haut à droite 9. VAUBAN -



Verdun City Tourist Office

Place de la Nation 55100 VERDUN

+33 (0)3 29 86 14 18

contact@tourisme-verdun.com

www.tourisme-verdun.com



TOURISME
GRAND VERDUN

TERRITOIRE DE PARTAGE